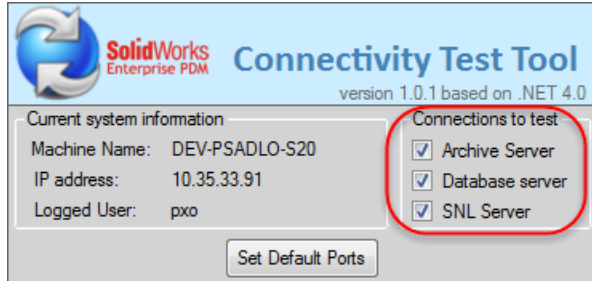


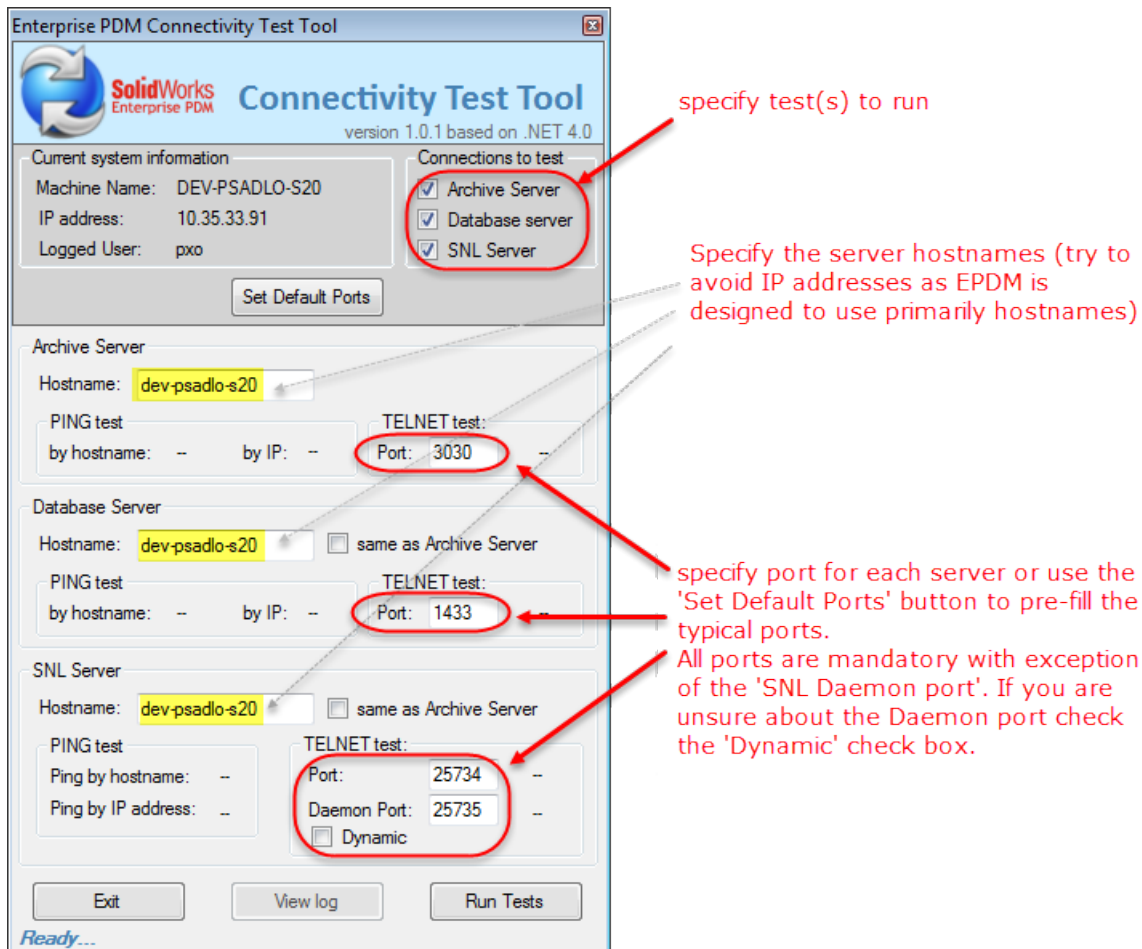
## SOLIDWORKS® Enterprise PDM Connectivity Test Tool

One of the fundamental steps while troubleshooting Enterprise PDM is to verify connectivity between all involved systems. The Enterprise PDM Connectivity Test Tool simplifies this task. The tool is based on .NET4.0, and utilizes PING, and TELNET commands. Before running the tool ensure .NET4 and Telnet client is installed on the system.



1. Start the tool and specify tests to run:



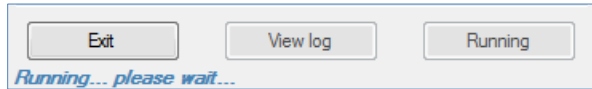
2. Fill in hostnames and ports of the systems that you want to test connectivity to.



3. Click 'Run Tests' to start the connectivity testing.

- Note that this may take some time to complete, depending on the network and the responsiveness of the remote systems.
- If the PING or TELNET command was successful, a  will show.
- If the PING or TELNET command failed, a  will show.

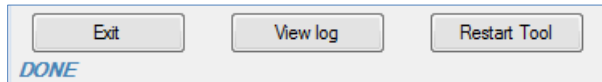
4. During the test a message in the status bar and the text on the originally 'Start Tests' button will inform you about the tests in progress, while the 'View log' button will appear inactive/disabled.



5. Once finished two things happen:

- a message in the status bar stating 'DONE' will appear
- 'View log' button will appear enabled. You can view detail results by clicking the 'View log' button.

Note: The 'Start Tests' / 'Running' button will show 'Restart Tool' and will allow you to restart the tool for next run.



6. You can use the log to troubleshoot why the connection test failed or provide the log to Technical Support.

Note: The log file is placed next to the application (EPDM Connectivity test.exe) so make sure you have write access to this location.

The log contains:

- Timestamp of each test.
- Name and IP address of the system where the tool is executed.
- Local profile name of the system where the tool is executed.
- Content of the local HOSTS file of system where the tool is executed.
- Registry information from local views if tool is executed on a client.
- Registry information for server settings if tool is executed on a server.
- Results of PING (including reverse IP lookup) and TELNET command.